



# HealthierHere

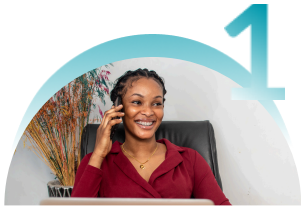
# COMMUNITY HUB

A Community Care Hub of Washington



Get help accessing resources and services in your community that support your health and well-being!

## How it Works



### SELF-REFER

Contact the HealthierHere Community Hub through our online form or by calling.



### MATCH

We will match you with a local Community Hub partner organization.



### CONNECT

A community health worker (CHW) from our partner will reach out and connect you to community resources.

## Who is Eligible

The HealthierHere Community Hub's services are available to you if you currently live in King County (even without a fixed address) and:

- you are experiencing issues that affect your health (i.e. food, housing, and/or financial insecurity)
- you could use assistance navigating access to services (i.e. applying for benefits or referral to programs)

## Ways to Connect to the Hub



### CALL CENTER

Community members can call **1-833-453-0336** to complete an intake and learn more about the Community Hub.

*Hours: 9am - 5pm weekdays.  
Hotline is closed on weekends.*

- OR -



### ONLINE FORM

Visit [bit.ly/HubReferrals](https://bit.ly/HubReferrals) or scan the QR code to fill out an online intake form.



## Trusted Community Guides

Community Health Workers are trusted guides here to help you find the services and resources you're looking for. Assistance is available in multiple languages such as Spanish, Somali, and Arabic.

Visit [bit.ly/HHhub](https://bit.ly/HHhub) to learn more.



Please select the organization that referred you to the Hub from the drop-down list on question 1 of the online intake form.